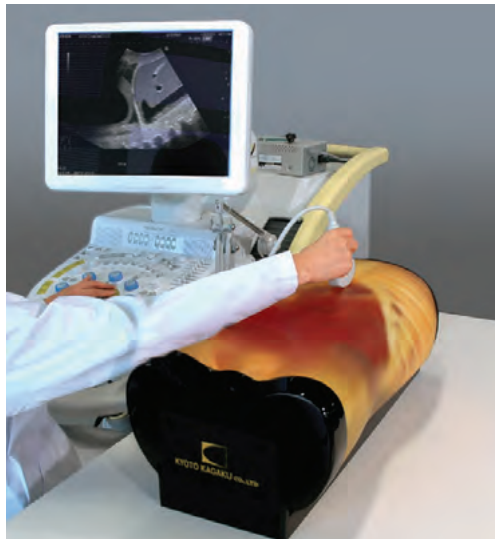


# FAST/Acute Abdomen Phantom "FAST/ER FAN"

The phantom has been developed to provide simulated training in FAST (Focused Assessment with Sonography for Trauma); an ultrasound examination directed at identifying the presence of free intraperitoneal or pericardial fluid in the traumatic patients, which allows detecting the possible cause of shocks such as mass hemothorax, intraperitoneal hemorrhage or cardiac tamponade.



Production supervision:  
Junji Machi, MD, PhD  
University of Hawaii at Manoa and Kuakini Medical Center

*An innovative phantom for repetitive training of FAST as an adjunct to the ATLS primary survey.*



## Training items:

Internal hemorrhage at perihepatic, perisplenic, pelvis and pericardium area.

Sonography for acute patients:

Internal hemorrhage at pericardial, bilateral chambers as well as intra-abdominal hemorrhage around the liver, the spleen and the urinary bladder.

Pathologies including cholecystitis, an aortic aneurysm, a lesion on the colon.



① Cardiac Tamponade



② Right Upper Abdominal Bleeding



③ Left Upper Abdominal Bleeding



④ Pelvic Bleeding



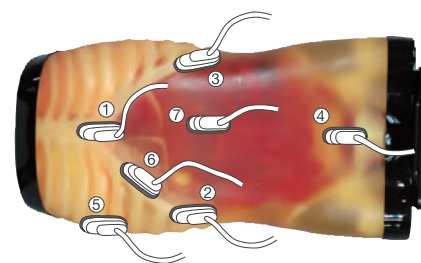
⑤ Pleural Bleeding



⑥ Peri-hepatic Bleeding

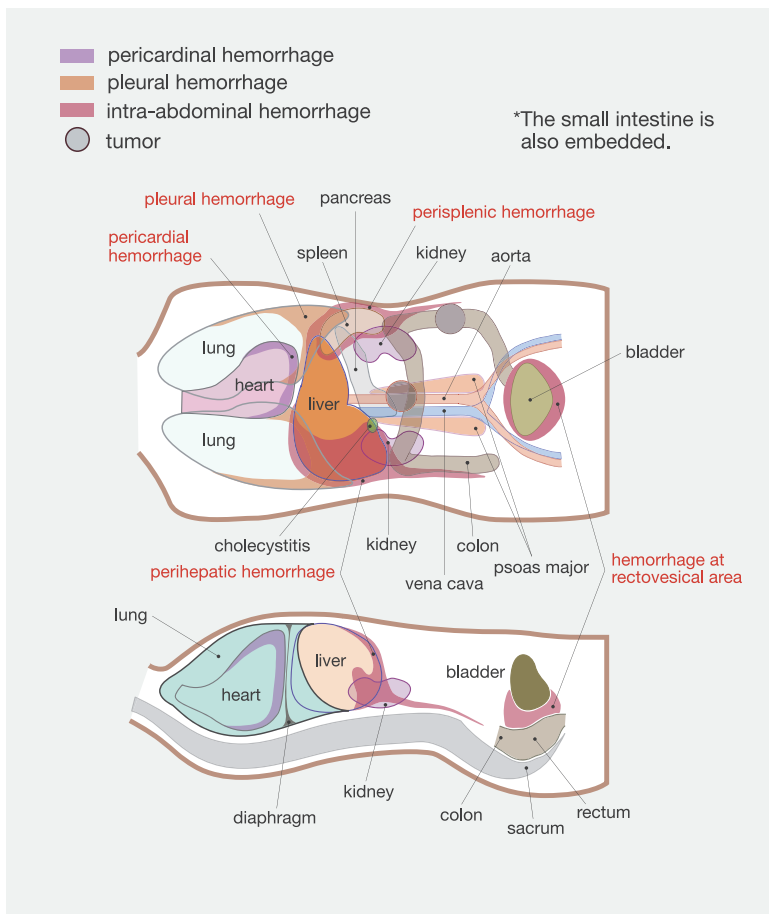


⑦ Abdominal Aortic Aneurysm



## KYOTO KAGAKU

15 Kitanechoya-cho, Fushimi-ku Kyoto,  
612-8388, JAPAN  
Tel: +81-75-605-2510  
Fax: +81-75-605-2519  
www.kyotokagaku.com  
rw-kyoto@kyotokagaku.co.jp



## FAST/Acute Abdomen Phantom "FAST/ER FAN" US 6

### Set includes:

- 1 ultrasound phantom with carrying base
- 1 tutorial manual (DVD)

### Materials:

soft tissue and organs: urethane base resin  
synthetic bones: epoxy base resin  
size: approx. 61 x 30 x 30 cm  
weight: approx. 31 kg

Specifications are subject to change.



Featured Products Coming Soon...

## Pediatric FAST/Acute Abdomen Phantom

A two years old anatomical phantom with full organs and bones for FAST/Acute sonography training.



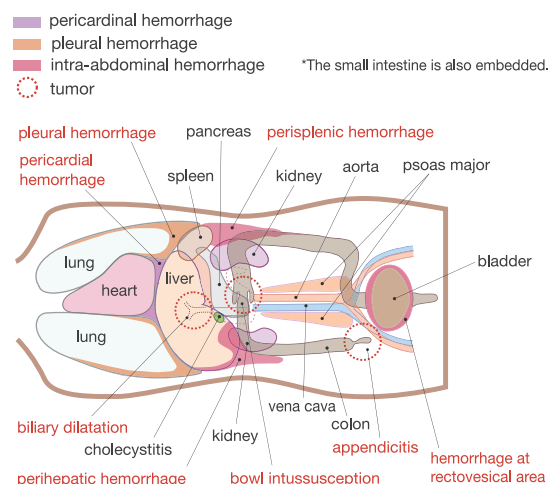
Appendicitis



Bowl Intussusception



Biliary Dilatation



KYOTO KAGAKU

15 Kitanekeya-cho, Fushimi-ku, Kyoto, 612-8388, JAPAN

Tel: +81-75-605-2510 Fax: +81-75-605-2519

www.kyotokagaku.com rw-kyoto@kyotokagaku.co.jp